

How To Make Simple Islamic Automatic Athan?

Using Z-Audio2 For Islamic Prayer Announcement:

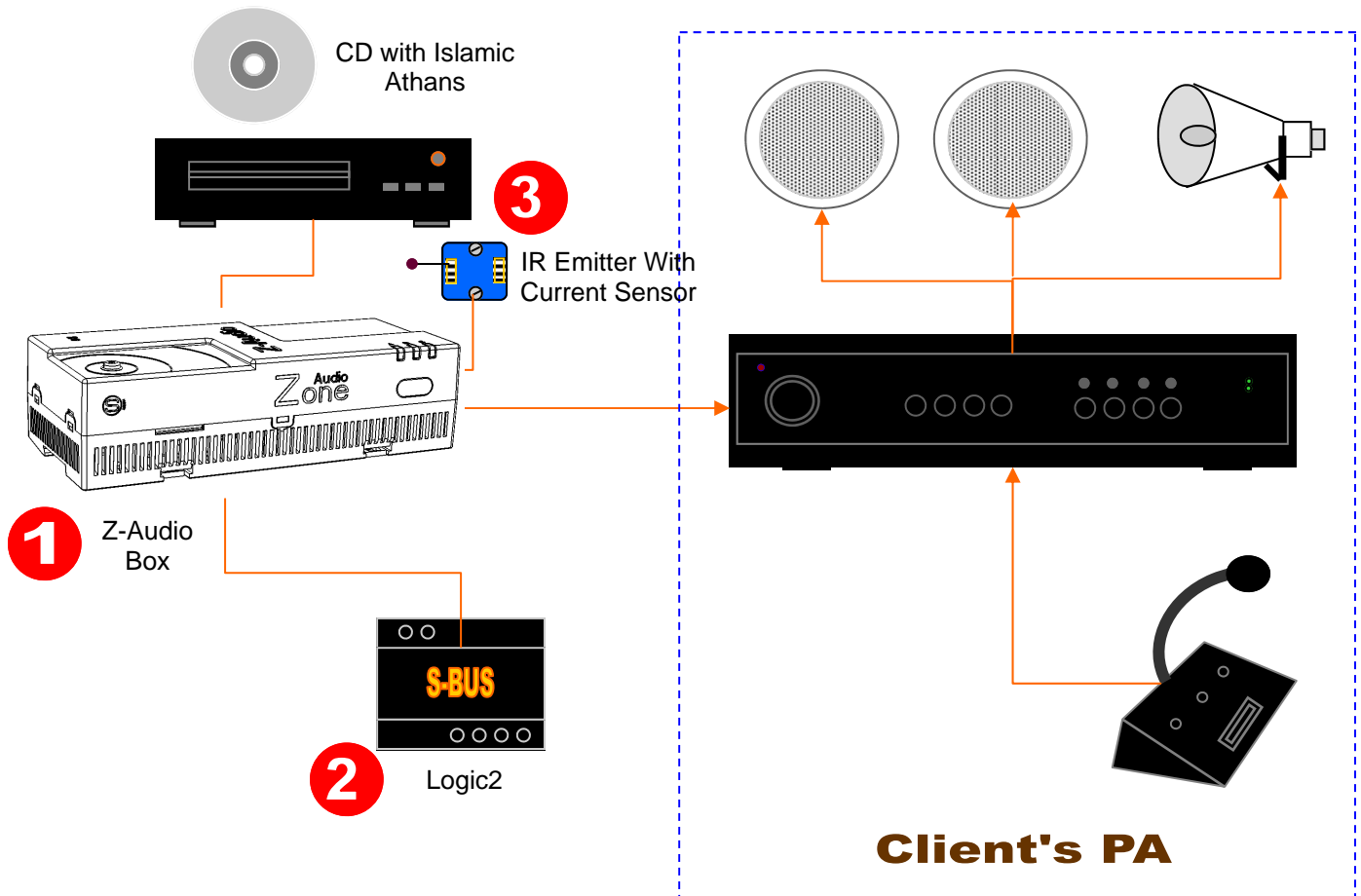
All you Need is to Have is

- 1- Remote controlled DVD/CD Player (A Recorded Fajr Athan on Track 1, & Second Athan on Track 2)
- 2- Infra Red Emitter with Current Sensor
- 3- Z-Audio with Logic Control

STEPS of IMPLIMENTATION

S-Logic Is Ready with Thousands of World Cities and Has The Prayer calculations according to Longitude and latitude astrological calculations Built in the system ready for 99 years to come. Steps To Do:

- 1- Connect System to Mosque PA System as Per the Diagram Below
- 2- Program the IR Codes of CD Player for On/Off, Track 1 Selection, Track 2 Selection, Play, Stop
- 3- Time the Period Needed to ON the CD Player, Choose track, Load it, and Play it till its End
- 4- Make 2Flags In The Program of the Logic Module One for Each Prayer Announcement Type
- 5- Using The Ready Athan Section in S-BUS Logic Module, Link Flags to corresponding Prayer Type.
- 6- At Time of Prayer, corresponding Flag start, At End of Flag Power Off system till next Prayer Time
(Simply: Prayer Time = On System, Play Track, Off System)



Ingredients: 1 Z-Audio, 1 IR Emitter, 1 Logic Module, 1 Power Supply, 1 CD Player and Athan CD (Client PA)

How To Make Simple Religus Prayers Play Automatic?

Using Z-Audio For Religious Prayer Announcement:

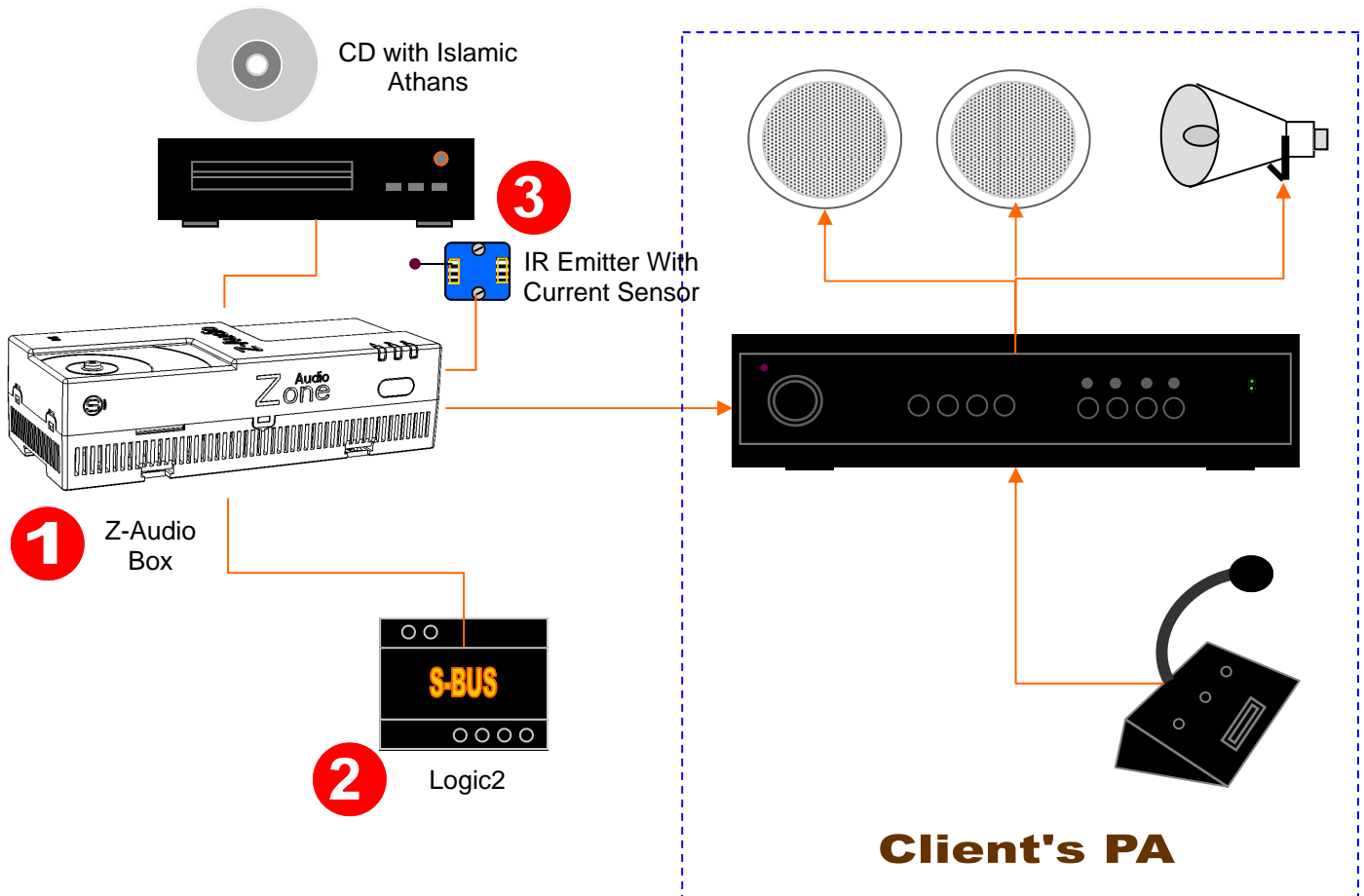
All you Need is to Have is

- 1-Remote controlled DVD/CD Player (A Recorded CD with Different Prayer and Greetings Tracks)
- 2- Infra Red Emitter with Current Sensor
- 3- Z-Audio with Logic Control

STEPS of IMPLIMENTATION

S-Logic Control Is Ready Hundreds Of Timers and Flags that can be programmed according to Day Mornings, Weekends, Dewali, Christmas, New Year, Birthdays + Grand father Greeting. Steps To Do:

- 1- Connect System to Your PA System as Per the Diagram Below
- 2- Program the IR Codes of CD Player for On/Off, Track # Selection, Play, Stop
- 3- Time the Period Needed to ON the CD Player, Choose track#, Load it, and Play it till its End
- 4- Make All Flags In The Program of the Logic Module One for Each Prayer Announcement Type
- 5- Program The Timers according to Day Type and Implement Flags.
- 6- At Time of Prayer, corresponding Flag start, At End of Flag Power Off system till next Prayer Time
(Simply: Prayer Time = On System, Play Track, Off System)



Ingredients: 1 Z-Audio, 1 IR Emitter, 1 Logic Module, 1 Power Supply, 1 CD Player and Prayers CD (Client PA)