

# HOW TO CONFIGURE IR MACRO

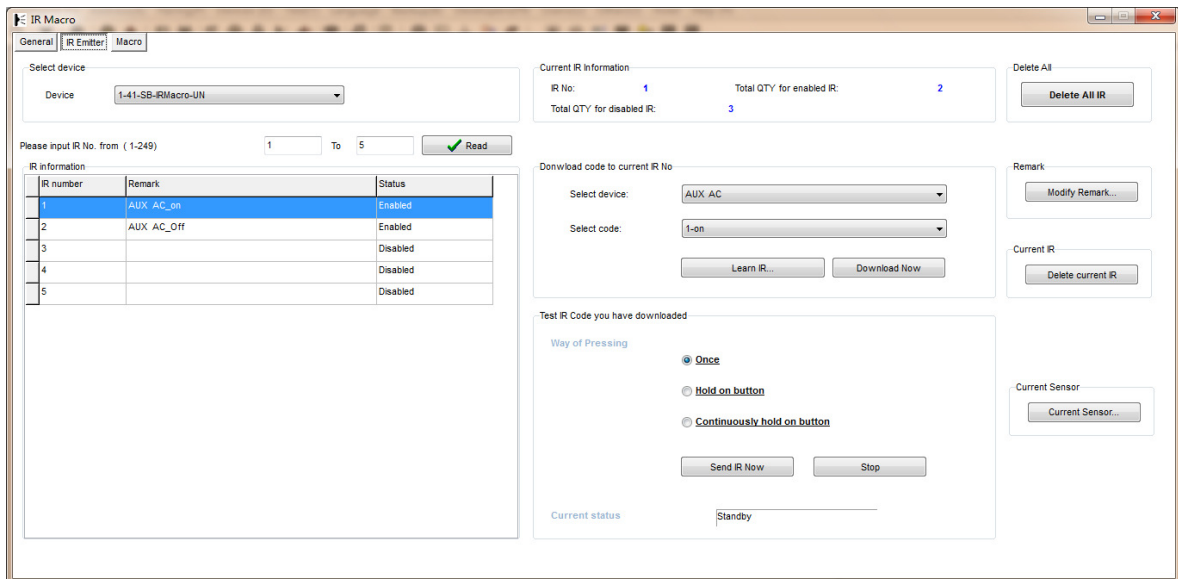
Prepared by: Tommy

## 1> Page One - General:



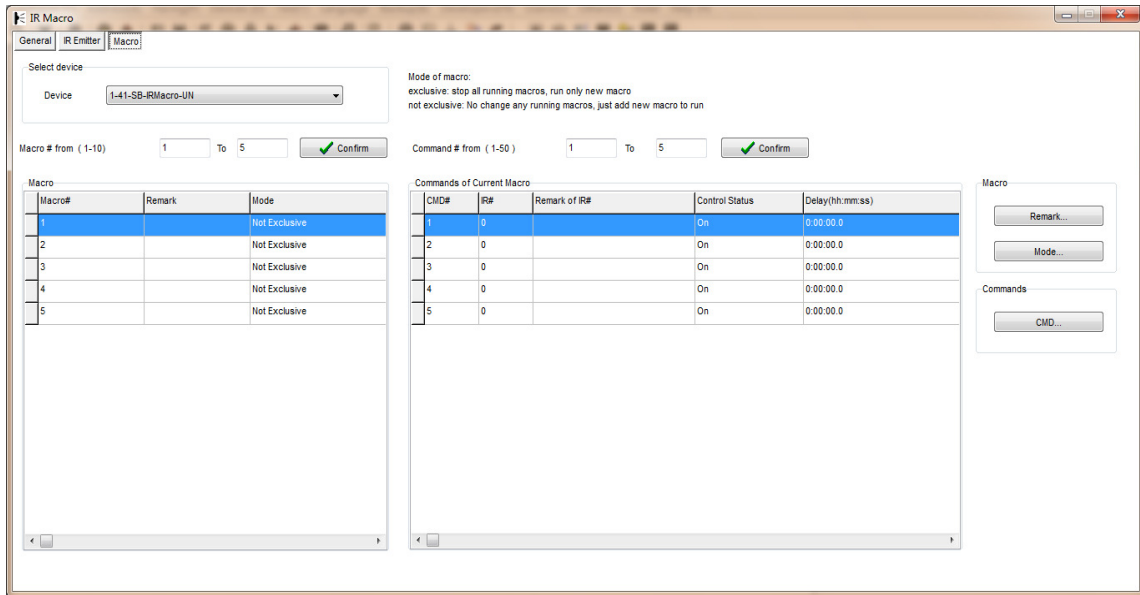
You can configure the general information of the IR Macro, include the remark, the subnet id and device id.

## 2> Page Two - IR Emitter:



You can configure the IR Code in this page, you can also select a existent code or learn a new code by IR Learner. After download the IR Code, you can click the “Send IR Now” button to test.

### 3> Page Three - Macro:



We can make a new macro from this page. First, I need to select the mode of macro: exclusive or not, the "exclusive" means that if this macro will be working, the others must stop. Second, configure the commands of macro, input the IR#,Delay Time and so on, when you finish all of the configure. You can test the macro use the below protocol:

## Single Channel Control

Operation Code: <b>0x0031</b>		
Target Subnet ID:	Specify subnet ID of target device	scope 1-254
Target Device ID:	Specify device ID of target device	scope 1-254
<b>Additional Content</b>		
LEN of additional content::4 bytes		
<b>Index of Additional Content</b>	<b>Remark</b>	<b>Value</b>
0	Macro #	1byte 1 – 10
1	ON/OFF Status	1byte 0:OFF 100:ON
2	Invalid	1byte 0 – 255
3	Invalid	1byte 0 – 255

### Response

Operation Code: <b>0x0032</b>		
Target Subnet ID:	Broadcast address	0xFF
Target Device ID:	Broadcast address	0xFF
<b>Additional Content</b>		
LEN of additional content::3 bytes		
Index of Additional Content	Remark	Value
0	Macro #	1byte 1 – 10
1	Flag for success/ failure	1byte, success=0xF8 failure =0xF5
2	ON/OFF Status	1byte 0:OFF 100:ON