

Manual for SMART LED Driver

DC12V/24V

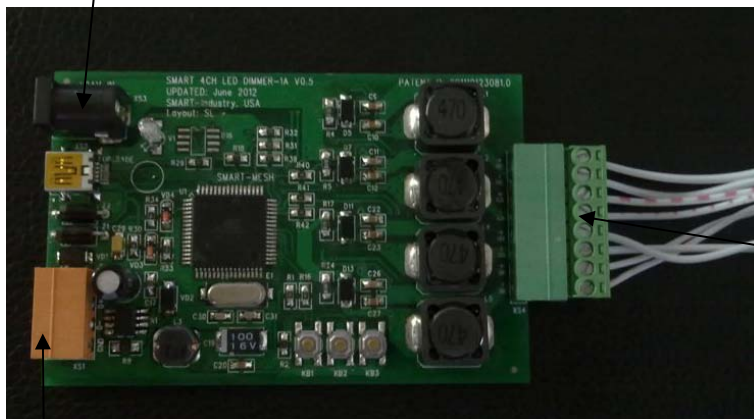
Version: V1.1

Date: July 19, 2012

SMART GROUP

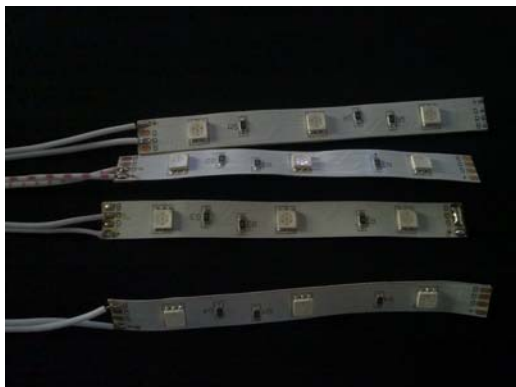
1. Connection for SMART LED Driver (Constant Voltage)

A. Power Supply DC12/24V



B.S-BUS connection (DC24+, D+, D-, GND)

LED Strip



C. RGBW 4CHs LED strip

Voltage of LED Strip required:

it depends on the power supply that you are using.

This LED driver can support DC 12V or DC24V power supply both.

If power supply for LED Driver you are using is DC12V, here you should connect DC12 LED strip,

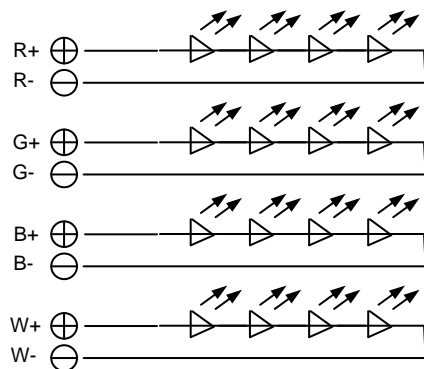
If power supply for LED driver you are using is DC24V, here you should connect DC 24V LED strip.

Don't connect the LED strip with wrong voltage, Otherwise the LED strip will be burn.

MAX Current of each LED Strip: 350mA (Can not more than 350mA)

Max LED Strips: 4 PCS

Connection for RGBW LED Strip:



2. Software Programming

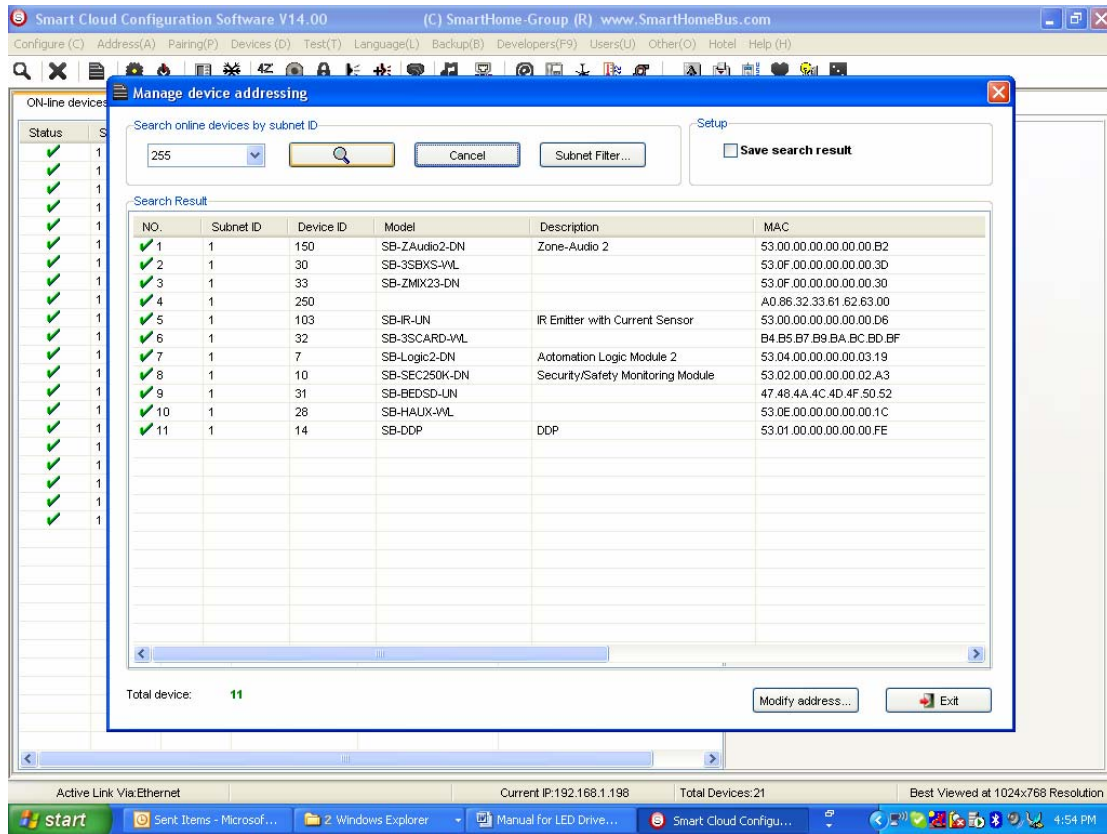
Smart Cloud configuration software is available from the link below:

http://www.4shared.com/rar/2CYLAT9/Smart_Cloud_Configuration_V140.html

2.1 Address

if you would like to know the address of LED driver, you can use Smart Cloud software.

Go to **Address Management** on smart Cloud software, then press button **scan**.



2.2 Console: DDP, 6B

2.3 Command Type: Single Channel Control

2.4 Channel

CH# of red: 49

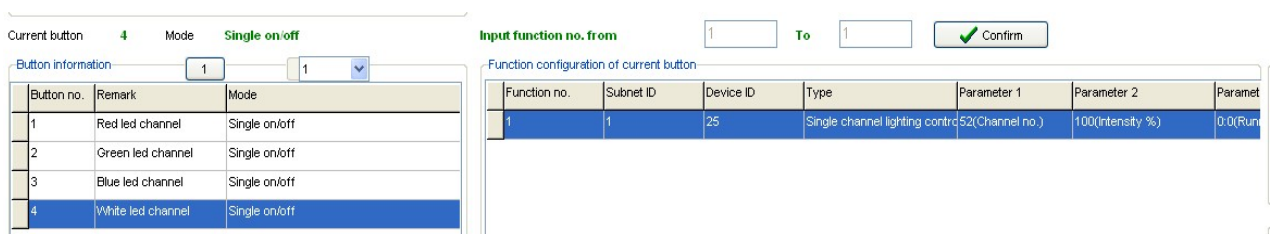
CH# of Green: 50

CH# of Blue: 51

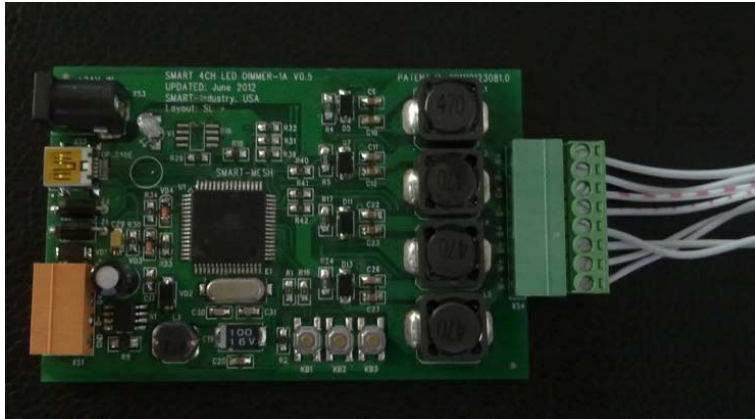
CH# of White: 52

2.5 Brightness: 0 - 100

Here is the picture for DDP Settings Page:



3. 3 buttons on PCB



- KB1: preset Sequences for LED, the sequence can be changed by press KB1 button
- KB2: when it's in the sequence mode, the speed of sequence can be adjusted if press KB2 button
- KB3: broadcast button, it is for detecting the address of LED driver.