

Manual for Trail Click and Touch Switch

Write by Tommy

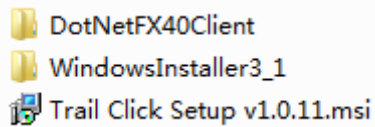
Update on Dec 05, 2013

1. Install

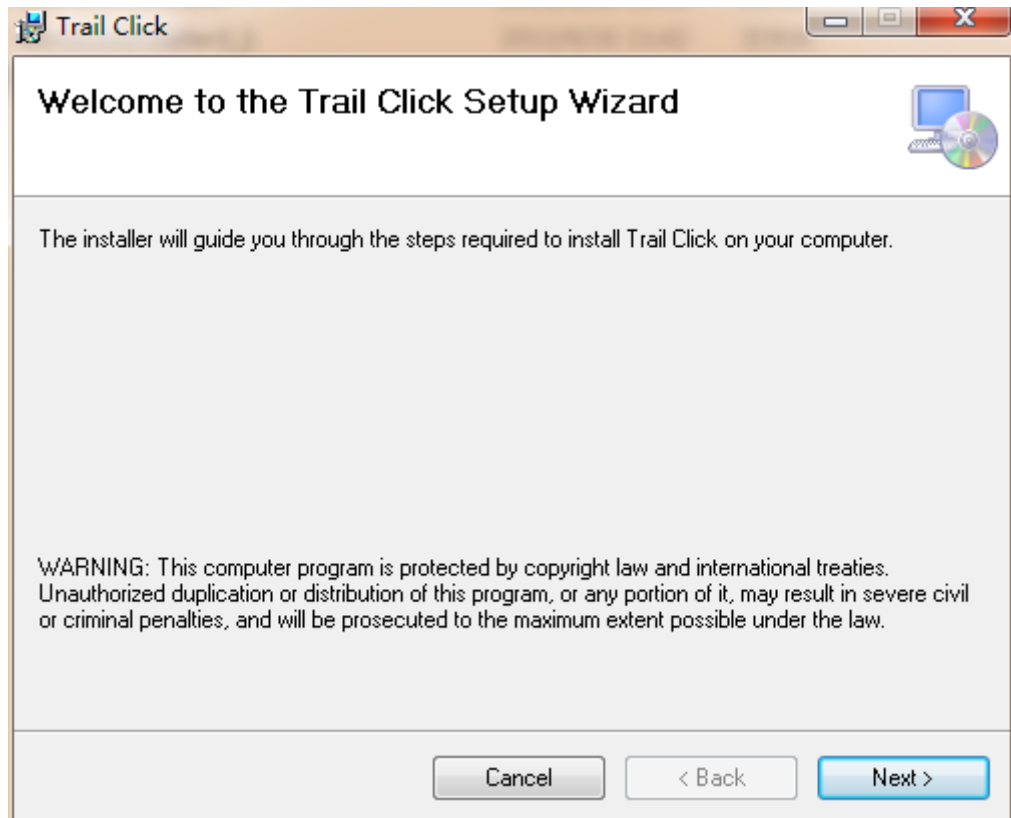
1> Download the installation package from our website:

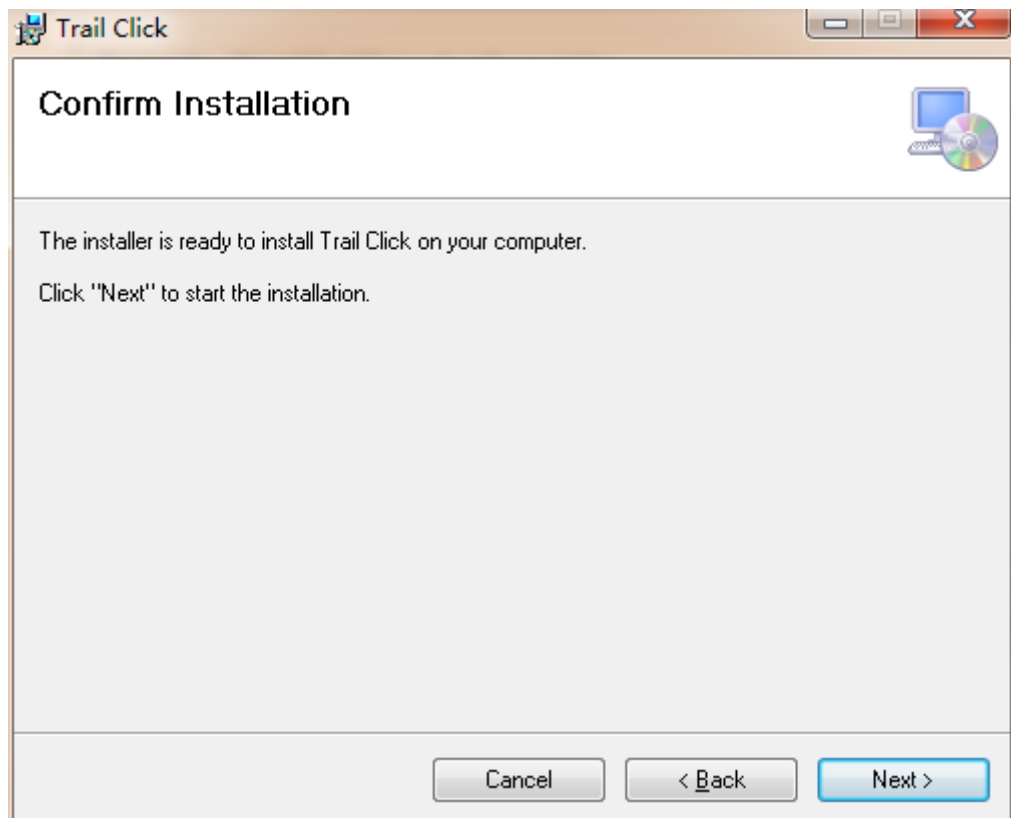
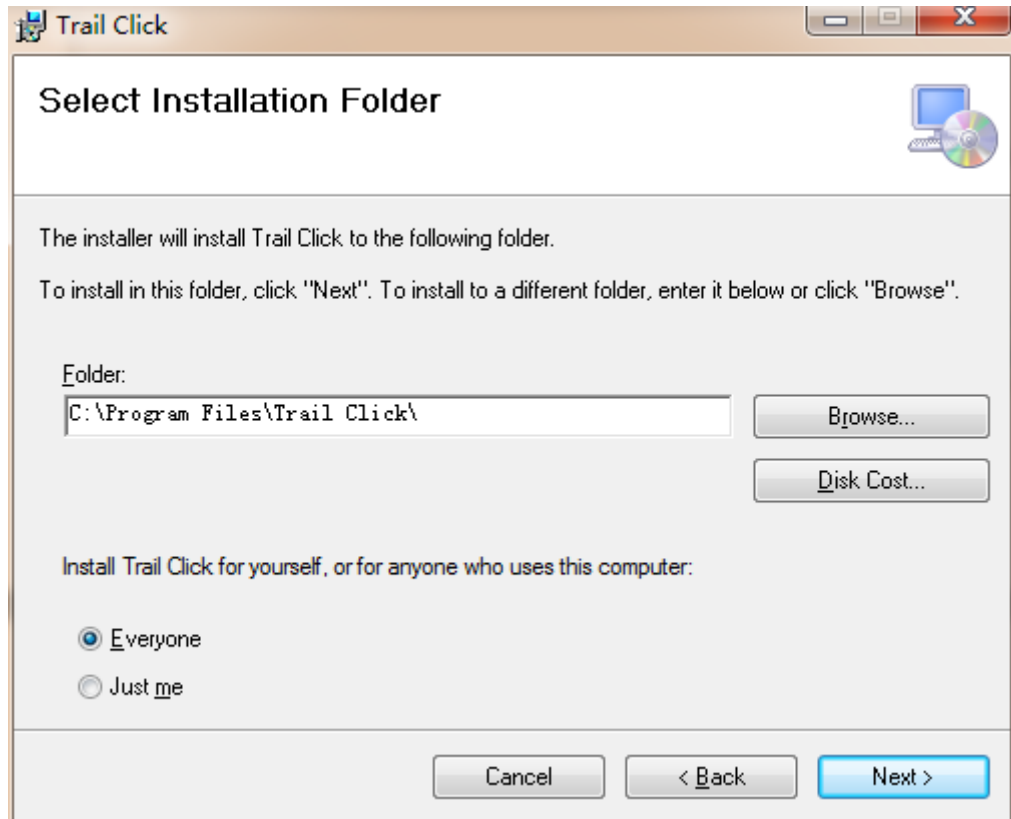
<http://www.smarthomebus.com/>

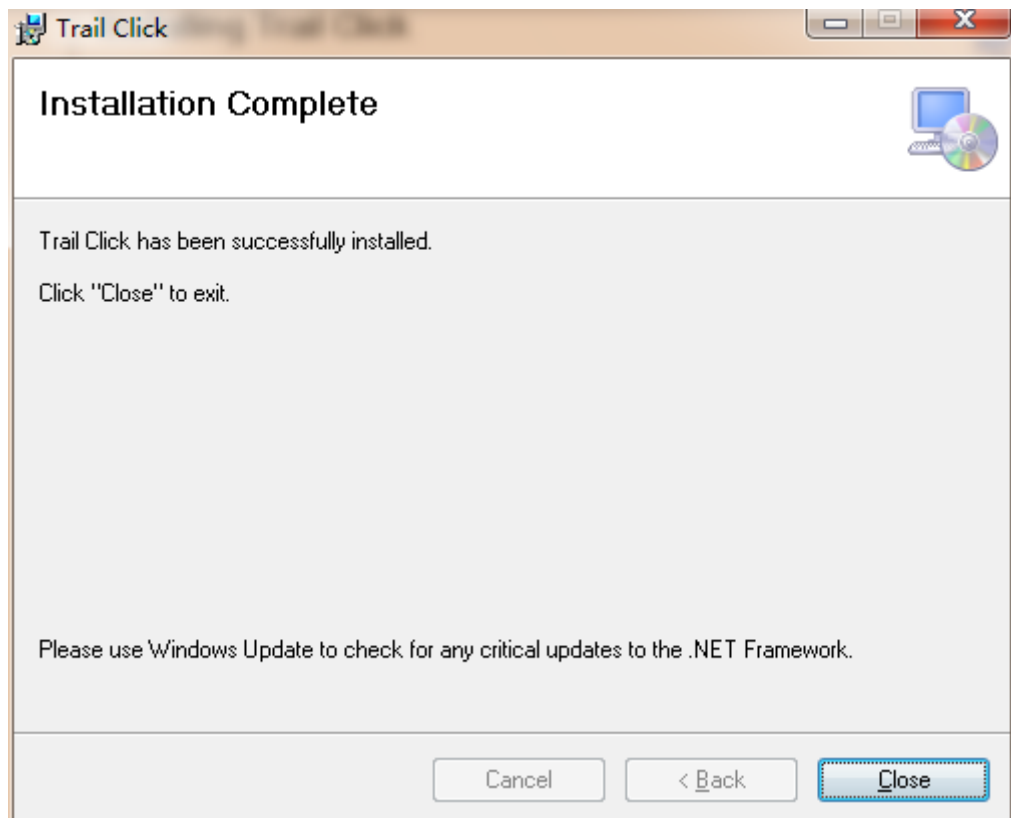
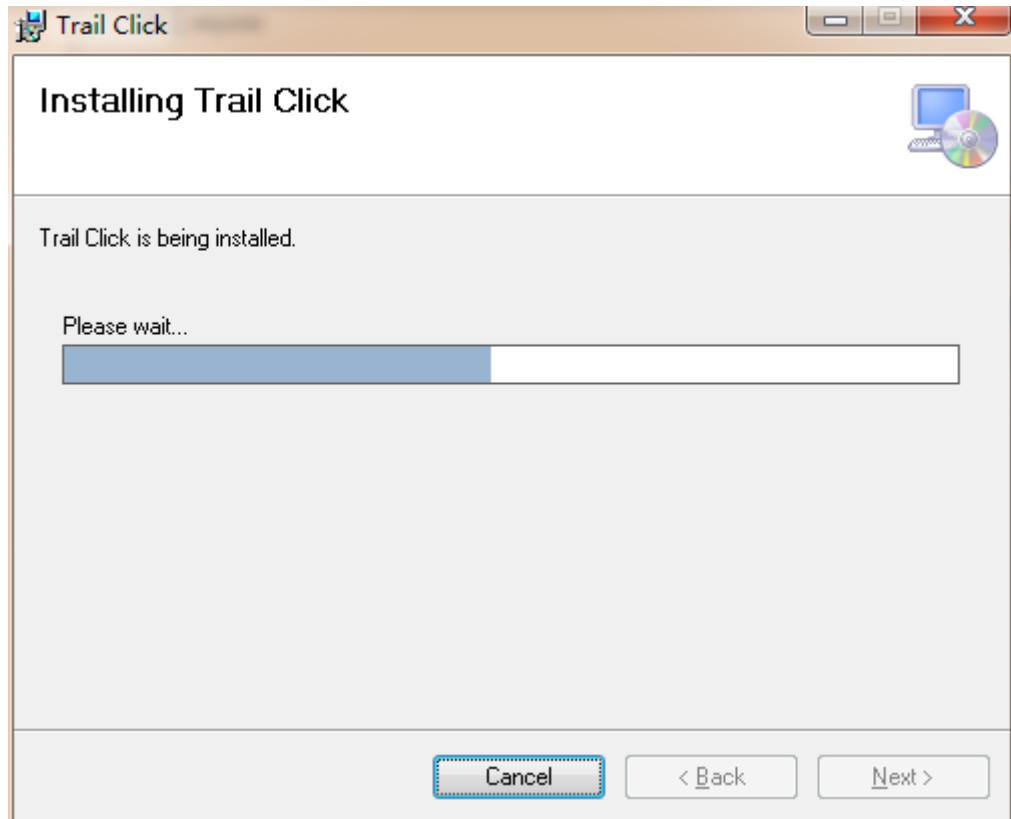
2> Decompress the package, you can see three files as follows:



3> Double click the file “Trail Click Setup v1.0.11.msi”





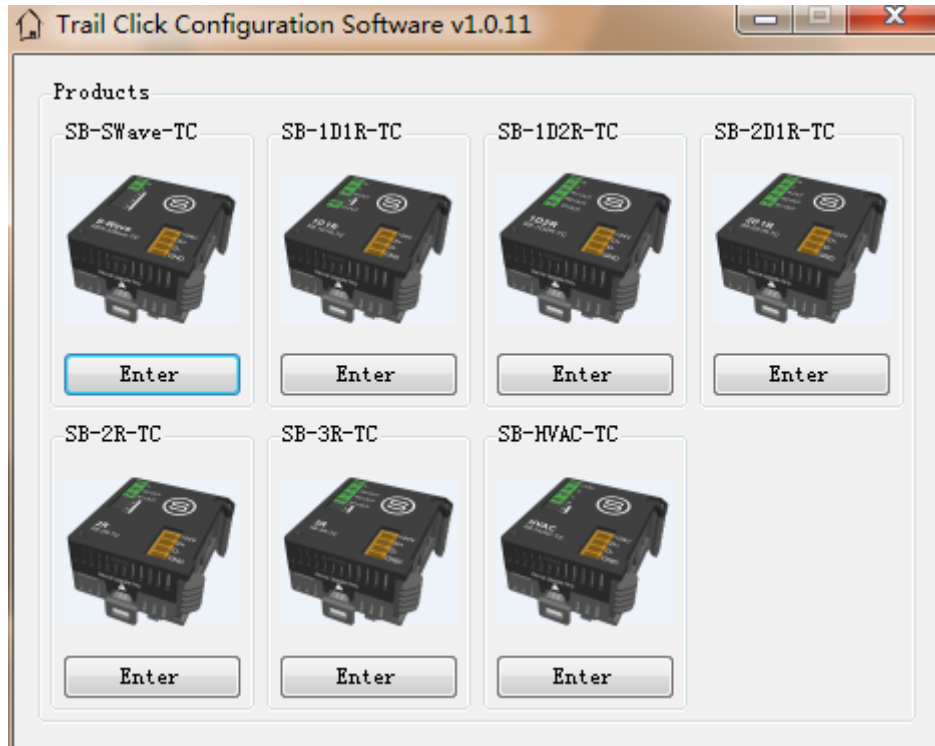


2. Configure

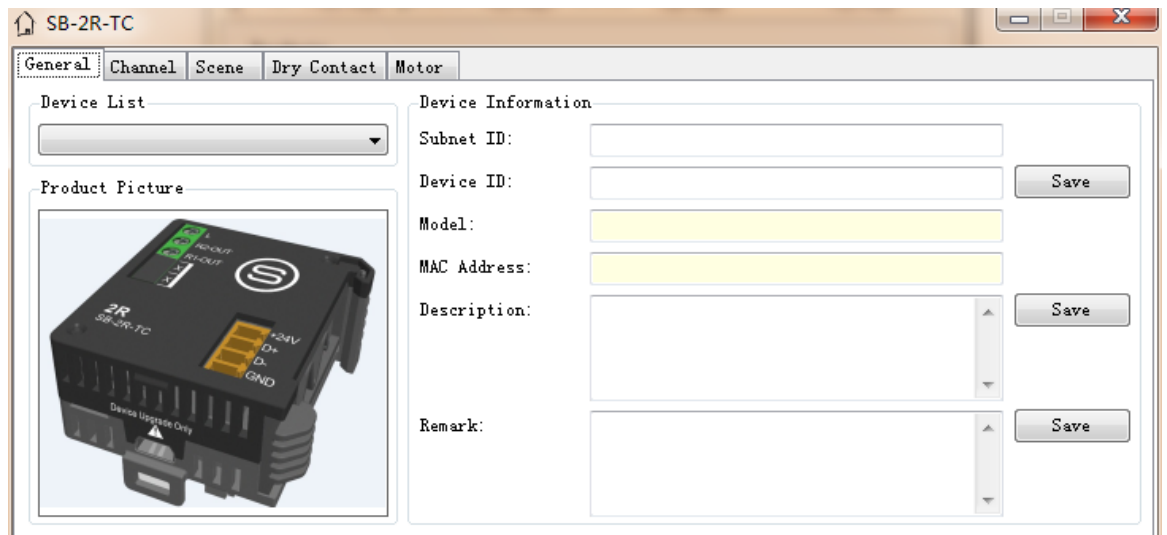
1> You can find an icon on the desktop as follows:



2> Double click it to run the software, you can see a configuration form as follows:





3> Choose one device which you want to configure, then click the “Enter” button or click the product picture directly

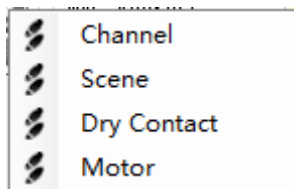


4> Some information will be shown when you move your mouse over the product picture



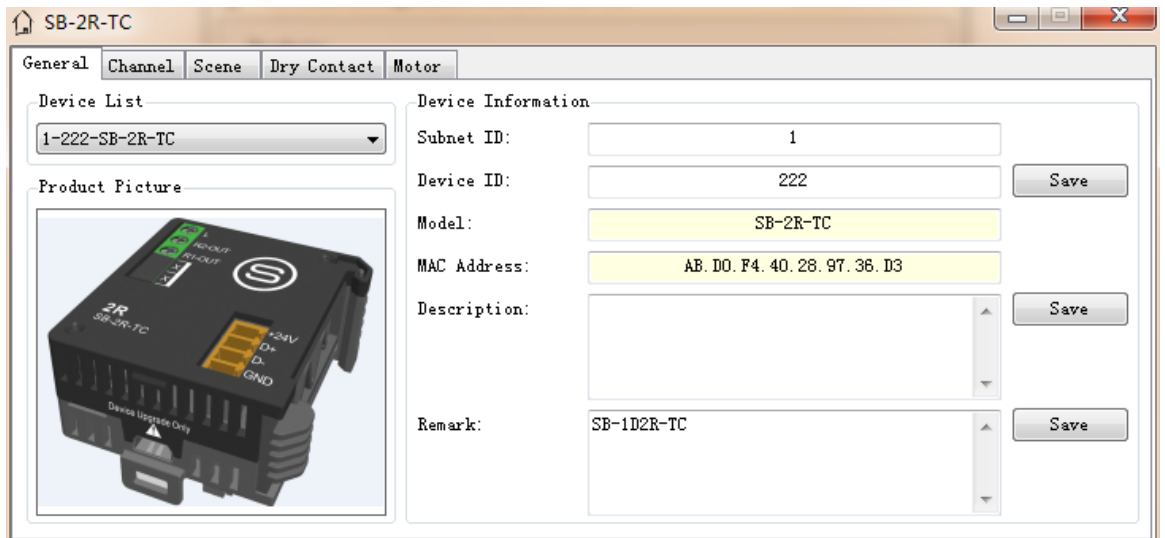
Click the picture to scan

- o> Click the product picture to scan
- o> : Refresh the “MAC Address” and the “Remark” and the “Firmware Version” of current device
- o> : Go to the setting page, if it has many pages of settings, there will be appearing a menu list as follows:



- o> : Read the latest version of device

5> Configure each pages of device



SB-2R-TC

General Channel **Scene** Dry Contact Motor

Channel Information

Relay - 1

Switching On Delay (s): Save

Protection Delay (mins): Save

Remark: Save

Relay - 2

Switching On Delay (s): Save

Protection Delay (mins): Save

Remark: Save

SB-2R-TC

General Channel Scene **Dry Contact** Motor

Scene Information

Input Scene NO. From: To: Read

Scene NO.	Remark	Running Time (mm:ss)	Status
0	1	01:01	✓
1	2	02:02	✓
2	3	03:03	✓
3	4	04:04	✓

Scene Modification

Scene Resume When Power On

Scene NO.: Resume the same scene as bef Save

Channel Information

Relay - 1

ON/OFF Status: Save

Remark:

Relay - 2

ON/OFF Status: Save

Remark:

SB-2R-TC

General Channel Scene **Dry Contact** Motor

Scene Information

Input Scene NO. From: To: Read

Scene NO.	Remark	Running Time (mm:ss)	Status
0	1	01:01	✓
1	2	02:02	✓
2	3	03:03	✓
3	4	04:04	✓

Scene Modification

Scene Resume When Power On

Scene NO.: Resume the same scene as bef Save

Channel Information

Relay - 1

ON/OFF Status: Save

Remark:

Relay - 2

ON/OFF Status: Save

Remark:

SB-2R-TC

General Channel Scene Dry Contact Motor

Scene Information

Input Scene NO. From: To:

Scene NO.	Remark	Running Time (mm:ss)	Status
0	1	01:01	✓
1	2	02:02	✓
2	3	03:03	✓
3	4	04:04	✓

Scene Modification

Scene Resume When Power On

Scene NO.:

Channel Information

Relay - 1

ON/OFF Status:

Remark:

Relay - 2

ON/OFF Status:

Remark:

SB-2R-TC

General Channel Scene Dry Contact Motor

Enable Dry Contact

Enable Dry Contact 1 Enable Dry Contact 2

Enable Dry Contact 3 Enable Dry Contact 4

Dry Contact Information

Edit:

NO.	Type	Mode	Status	Remark	Delay (mm:ss)
1	Mechanical...	N/A	ON		0:0
1	Mechanical...	N/A	OFF		0:0
2	Single On/Off	On/Off Mode	N/A		N/A
3	Combinatio...	On/Off Mode	N/A		N/A
4	Invalid	On/Off Mode	N/A		N/A

Commands of current Dry Contact

Input Command NO. from (1~15) to

NO.	Subnet ID	Device ID	Type	Parameter 1	Parameter 2	Parameter 3
1	0	0	Invalid	N/A	N/A	N/A
2	0	0	Invalid	N/A	N/A	N/A
3	0	0	Invalid	N/A	N/A	N/A

Modify Type

Dry Contact NO.	Type
1	Mechanical Switch
2	Single On/Off
3	Combination On/Off
4	Invalid

Modify Synchronously

Modify Mode

Dry Contact NO.	Mode
2	On/Off Mode
3	On/Off Mode
4	On/Off Mode

Modify Synchronously

Save Cancel

Modify Remark

Dry Contact NO.	Remark	Status
1		✓
1		✓
2		✓
3		✓
4		✓

Modify Synchronously

Save Cancel

Modify Delay

Dry Contact NO.	Delay (mm:ss)	Status
1	0:0	✓
1	0:0	✓

Modify Synchronously

Save Cancel

Commands Settings

Synchronously Option

Sync Subnet ID Sync Device ID Sync Type Sync Parameter 1 Sync Parameter 2 Sync Parameter 3 Sync All

NO.	Subnet ID	Device ID	Type	Parameter 1	Parameter 2	Parameter 3	Status
1	0	0	Invalid	N/A	N/A	N/A	✓
2	0	0	Invalid	N/A	N/A	N/A	✓
3	0	0	Invalid	N/A	N/A	N/A	✓

Save Cancel

SB-2R-TC

General Channel Scene Dry Contact Motor

Enable/Disable Motors Control

CH1 & CH2 Max. Time: 10 Seconds