

# Manual for upgrading firmware of Z-AUDIO or RSIP

Manual version: V1.0

Date: March 13, 2012

## 1. The way of upgrading firmware of Z-Audio or RSIP

The way of upgrading firmware of Z-Audio is the same as RSIP, they are all by LAN, and your computer should be in the same network with Z-audio or RSIP.

To check the network, you can PING the IP Address of Z-Audio or RSIP.

The factory default IP address of Z-Audio is 192.168.10.200

the factory default IP address of RSIP is 192.168.10.100

## 2. Install the software **LM Flash Programmer** on your computer



double clicks above software to install it, then just click Next button until finish software installation.

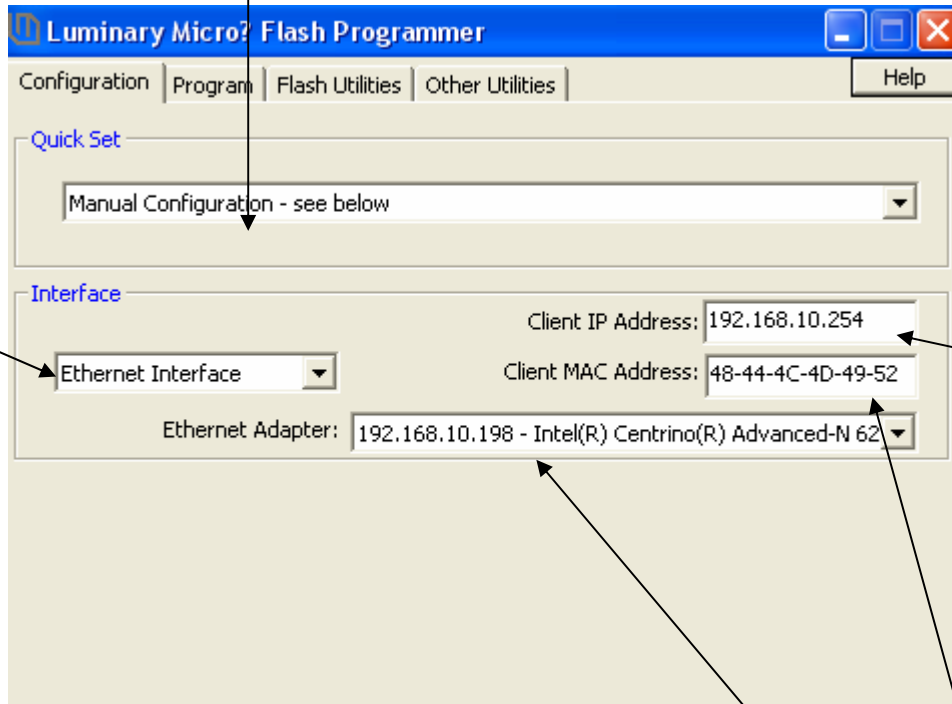
## 3. LM Flash Programmer Software Settings

runs LM software on your desktop



**Select Tab** Configuration

a. Select **Manual Configuration**



b. Select **Ethernet Interface**

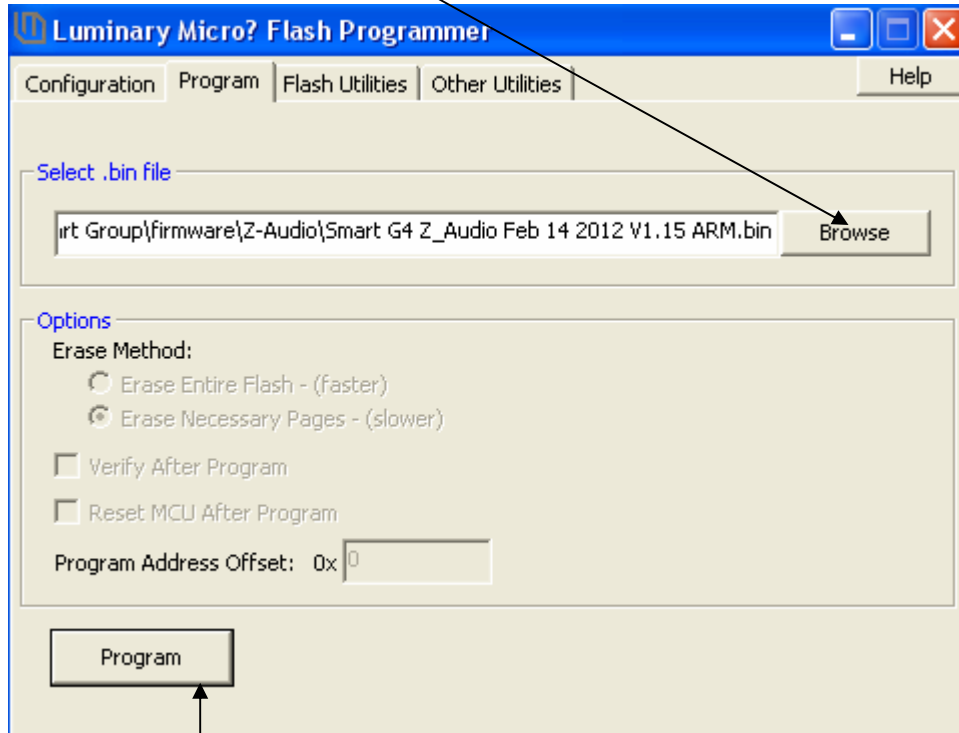
c. Put an available IP address. This IP address is not fixed. This IP address should be unique and in the same network with your computer and Z-Audio or RSIP device

d. MAC address is fixed, put this MAC address and don't change it.

e. Select local IP address of your computer

#### 4. Steps of Firmware Upgrade

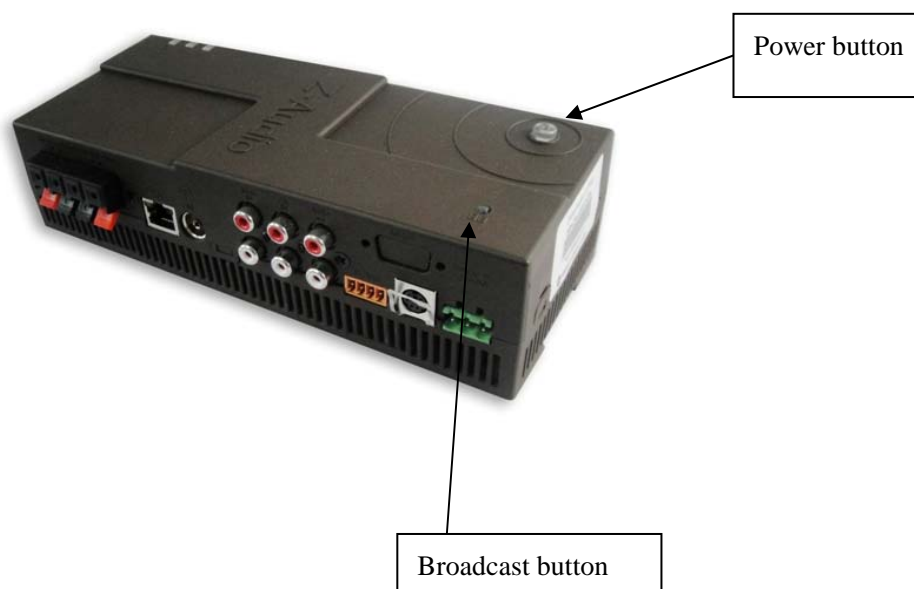
##### a. select the firmware file



##### b. Click Program button above

##### c. on z-audio/RSIP side, power off the devices

Z-audio





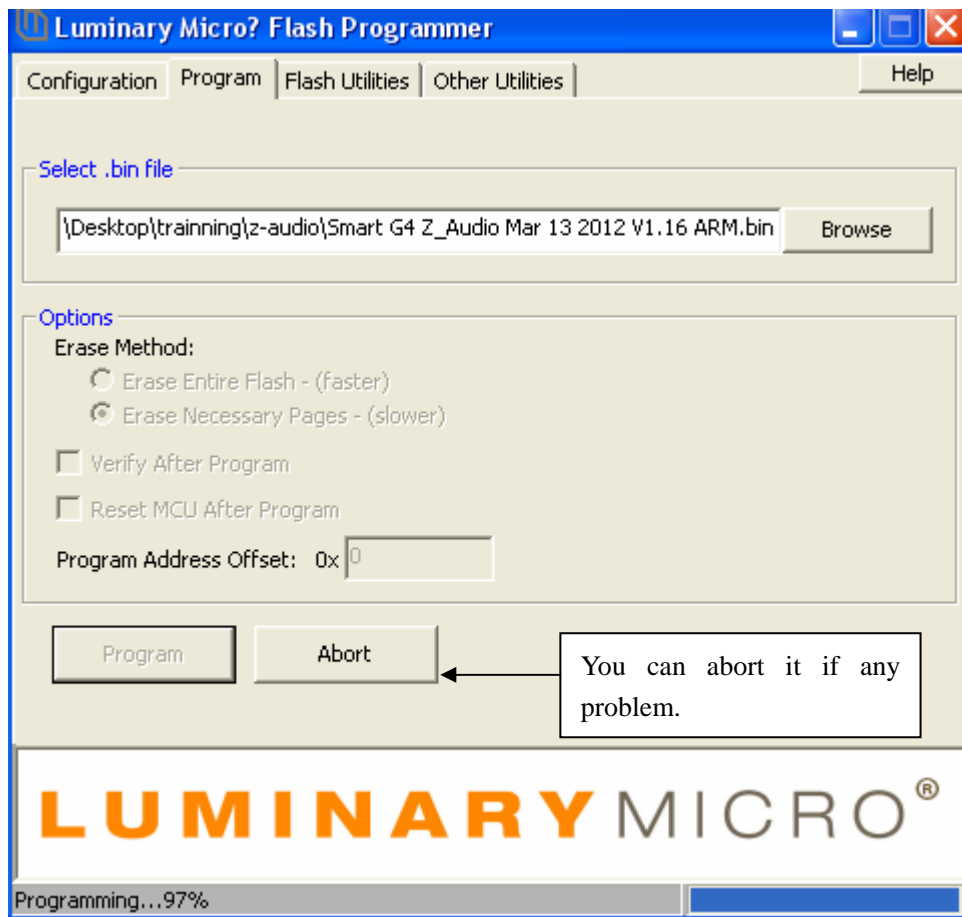
Reset  
button

Remove bus  
connection  
to power off

(RSIP)

**d. keep pressing broadcast button/Reset button by one of your hand**

**e. Power on device by your another hand , when you see firmware upgrade is started like the screen below, you must immediately release your hand from the broadcast button/Reset button**



(Firmware is on progress)

If you don't release your hand from broadcast button/Reset button when the firmware upgrade is started, the IP address of device might be reset to factory default.

If this case happens, you need to change the IP address of device by smart-cloud configuration software.

Here is the factory default IP address:

The factory default IP address of Z-Audio is 192.168.10.200

the factory default IP address of RSIP is 192.168.10.100

**f. After complete the firmware upgrade, restart the device. (Power off device then power on device).**