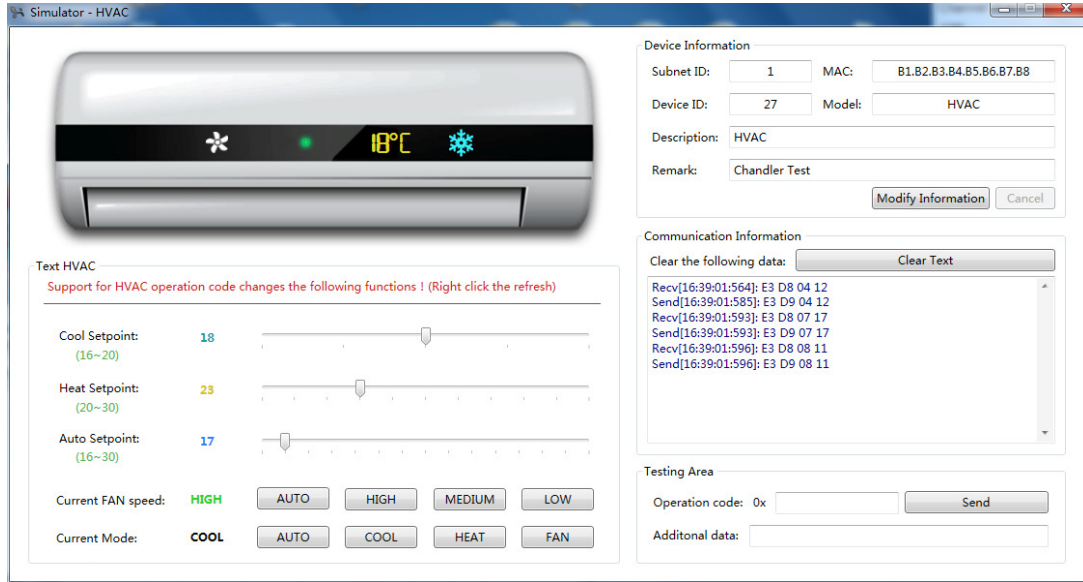


HVAC Simulator

Soft interface:



Modify the equipment information :

Device Information

Subnet ID: MAC:

Device ID: Model:

Description:

Remark:

Click on the Modify information

Button state changes Click on the Modify information, The modified click save



Instructions show:

Communication Information

Clear the following data:

```

Recv[16:26:52:271]: E3 D8 04 11
Send[16:26:52:289]: E3 D9 04 11
Recv[16:26:52:295]: E3 D8 07 17
Send[16:26:52:295]: E3 D9 07 17
Recv[16:26:52:298]: E3 D8 08 11
Send[16:26:52:298]: E3 D9 08 11
    
```

Used to clear the command bar:

Independent test instruction:

Testing Area

Operation code: 0x

Additional data:

Click on the send button test input instructions:

Operation code: 0x

Additional data:

Support direct control instruction(Please view 《HVAC Protocol V1.1》):

0xE3D8、0xE122、0xE126、0x1902、0x193A.....

Byte limit :

if the input is empty : Alarm : Provide additional data is incorrect! (0xF5)




if the input is error : Alarm : There is something wrong with the input value.

Control Panel:

(Support all instructions)

Text HVAC

Support for HVAC operation code changes the following functions ! (Right click the refresh)

Cool Setpoint:	18	
(16~20)		
Heat Setpoint:	23	
(20~30)		
Auto Setpoint:	17	
(16~30)		
Current FAN speed:	HIGH	<input type="button" value="AUTO"/> <input type="button" value="HIGH"/> <input type="button" value="MEDIUM"/> <input type="button" value="LOW"/>
Current Mode:	COOL	<input type="button" value="AUTO"/> <input type="button" value="COOL"/> <input type="button" value="HEAT"/> <input type="button" value="FAN"/>



Example:

Send 0xE3D8 03,00 :

The screenshot shows the 'Simulator - HVAC' window. On the left is a 3D model of a white HVAC unit with a red light and a temperature display showing '°C'. Below the model is a large empty text box labeled 'Text HVAC'. On the right, there are two main sections: 'Device Information' and 'Communication Information'. The 'Device Information' section contains fields for Subnet ID (1), Device ID (27), Model (HVAC), and Remark (Chandler Test), with 'Modify Information' and 'Cancel' buttons. The 'Communication Information' section has a 'Clear Text' button and a log of messages. The log shows several 'Recv' and 'Send' messages with timestamps and hex data. The last two messages are highlighted with a red box: 'Recv[16:43:03:923]: E3 D8 03 00' and 'Send[16:43:03:923]: E3 D9 03 00'. Below the log is a 'Testing Area' with an 'Operation code' field containing '0x E3D8' and a 'Send' button, and an 'Additional data' field containing '03,00'.

Control Panel direct manipulation (Support all state) :

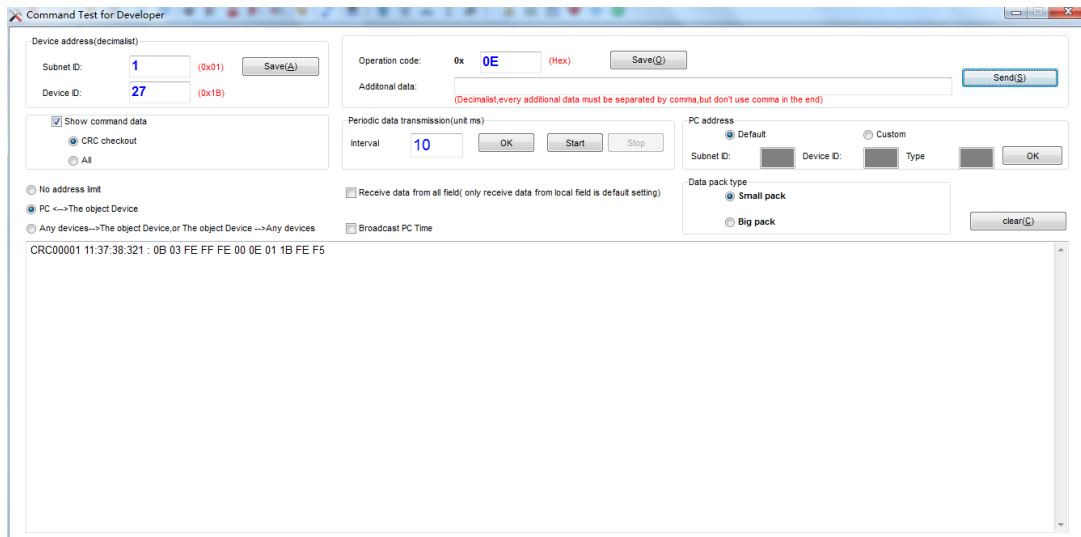


Text HVAC

Support for HVAC operation code changes the following functions ! (Right click the refresh)

Cool Setpoint:	18	
	(16~20)	
Heat Setpoint:	23	
	(20~30)	
Auto Setpoint:	17	
	(16~30)	
Current FAN speed:	LOW	<input type="button" value="AUTO"/> <input type="button" value="HIGH"/> <input type="button" value="MEDIUM"/> <input checked="" type="button" value="LOW"/>
Current Mode:	HEAT	<input type="button" value="AUTO"/> <input type="button" value="COOL"/> <input type="button" value="HEAT"/> <input type="button" value="FAN"/>

Smart Cloud F9



Smart Cloud can be operation HVAC-Simulator (using the instructions)

(Must be in the same local area network (LAN))

