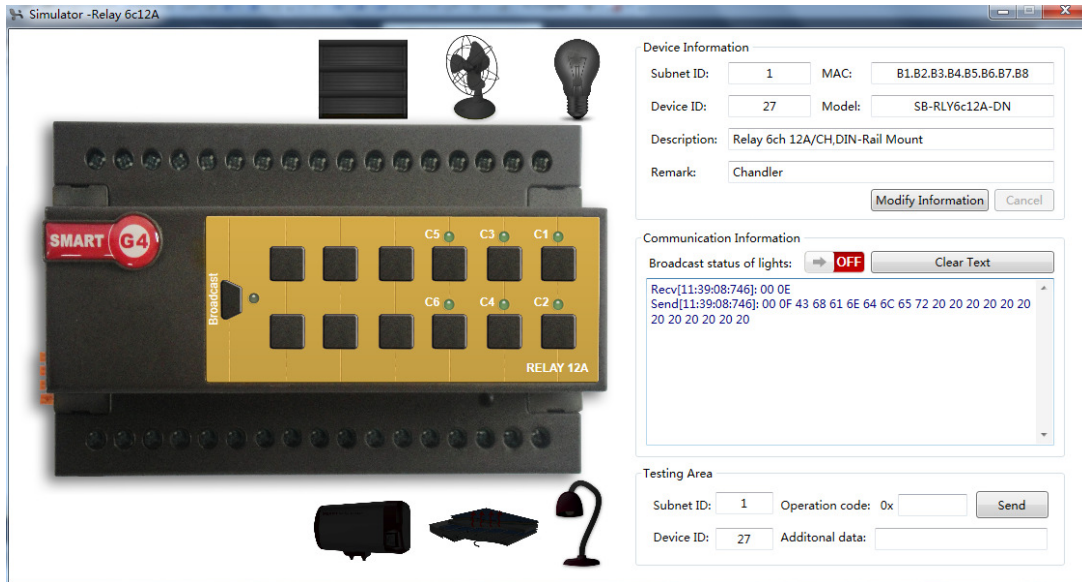


# Relay Simulator

Soft interface:



Modify the equipment information :

**Device Information**

Subnet ID:     MAC:

Device ID:     Model:

Description:

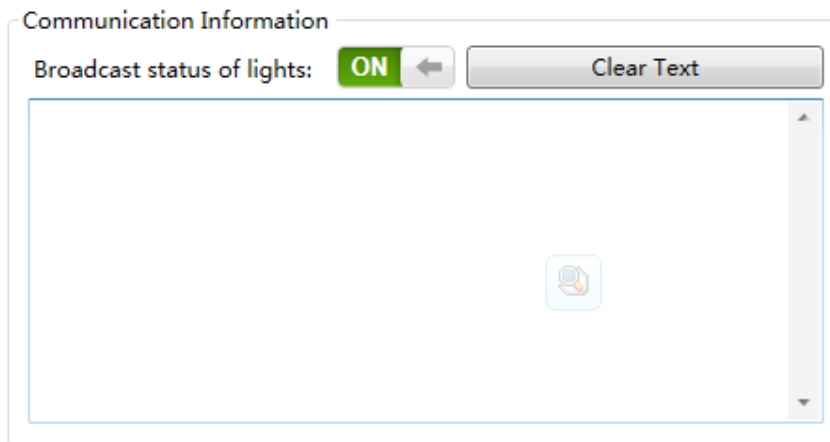
Remark:

Click on the Modify information


Button state changes Click on the Modify information, The modified click save



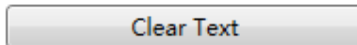
**Instructions show:**



Click to close the radio instructions :” Send[15:01:58:751]: EF FF 03 00 00 06 00”

Broadcast status of lights:  **OFF**

Used to clear the command bar:



**Independent test instruction:**

Testing Area

Subnet ID:  Operation code: 0x

Device ID:  Additional data:

Testing Area

Subnet ID:

Device ID:

According to the

Device Information

Subnet ID:

Device ID:

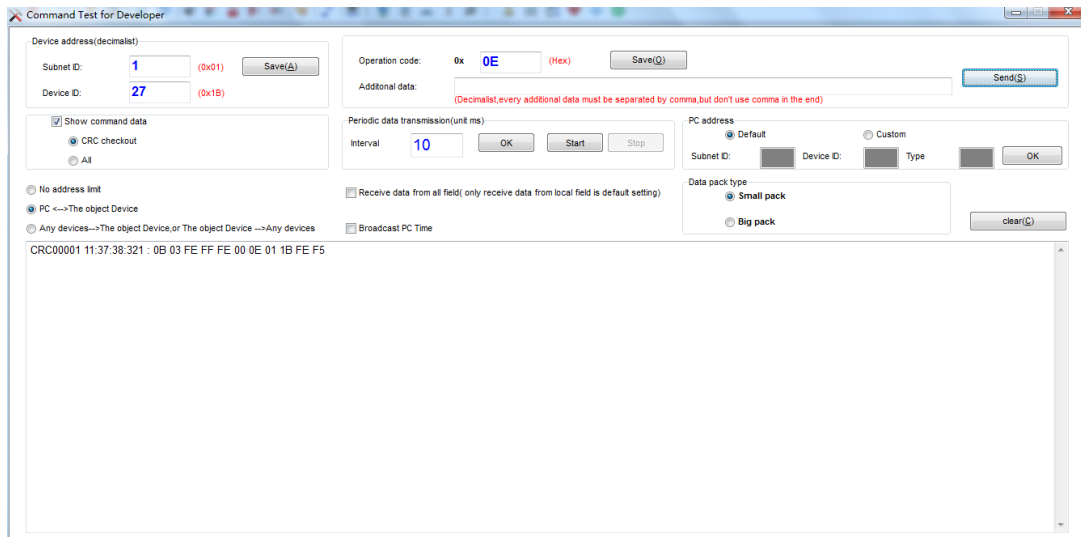
change

Click on the send button test input instructions:

Operation code: 0x

Additional data:

## Smart Cloud F9



Smart Cloud can be operation Relay-Simulator (using the instructions)

( Must be in the same local area network (LAN) )

