

2014

How to upgrade firmware for
DDPS & How to pair two functions
work together (DDP & 9in1)

A large, stylized logo consisting of a dark red circle with a white center. Inside the white center, the letters 'G4' are written in a bold, dark red, sans-serif font. The logo has a slight gradient and a shadow effect.

G4

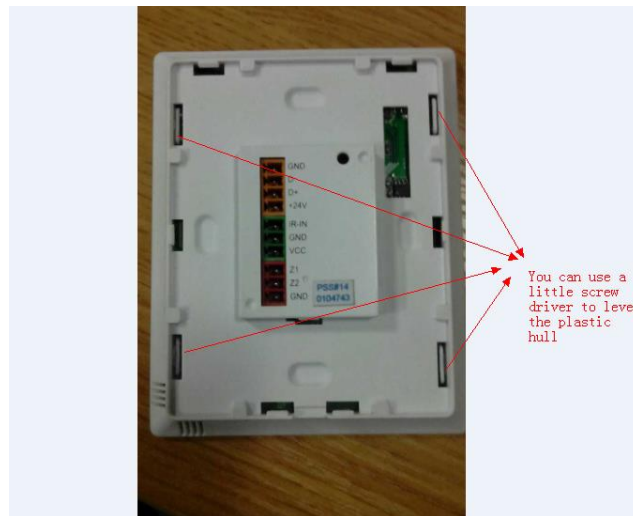
Terry



1, You need to unpack the DDPS.



Lever these two points first

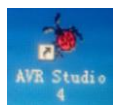


You can use a little screw driver to lever the plastic hull

2, Then it will show this PCB Board. And you will see two upgrade ports. One is for DDP function, another one is for 9in1 function.



3, Please kindly connecting your Upgrade Kit to the DDPS upgrade port. When you upgrade the 9in1 firmware, you need to select **Atmega64**. When you upgrade the DDP firmware, you need to select **Atmega128**. By using:



Here are the links you can go to download the firmware.

DDPs-9IN1s (V1.41):

<http://smarthomebus.com/dealers/Softwares/Firmwares%20by%20Products/DDPs/G4%20DDPs-9IN1s%20Apr%2001%202014%20V1.41.zip>

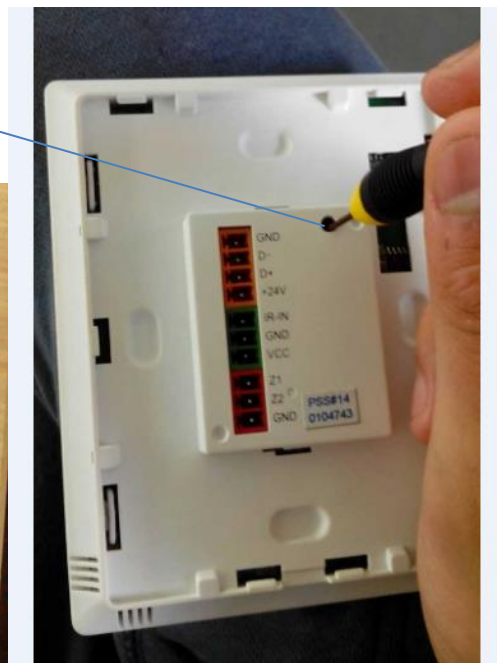
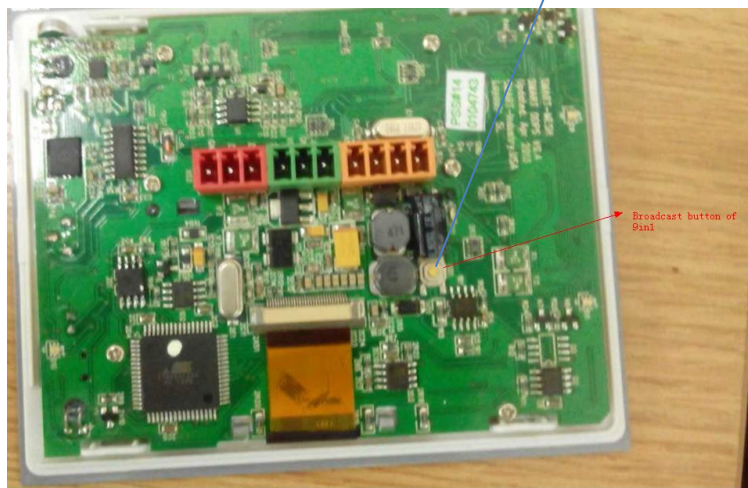
DDPs-DDP (V1.60):

<http://smarthomebus.com/dealers/Softwares/Firmwares%20by%20Products/DDPs/Smart%20G4%20DDPs%20Oct%2024%202013%20V1.60.zip>

4, After you finished the firmware upgrading, you need to pair the DDPS.

a), Click the 9in1 broadcast button for around 6 seconds until the light inside turns to red and blinks.

This is the broadcast button of 9in1. First you need to long press this button for around 6 seconds until the light turns to red and blinks.



b), Then go to a DDP button and do a **quick click** to confirm the pairing.

